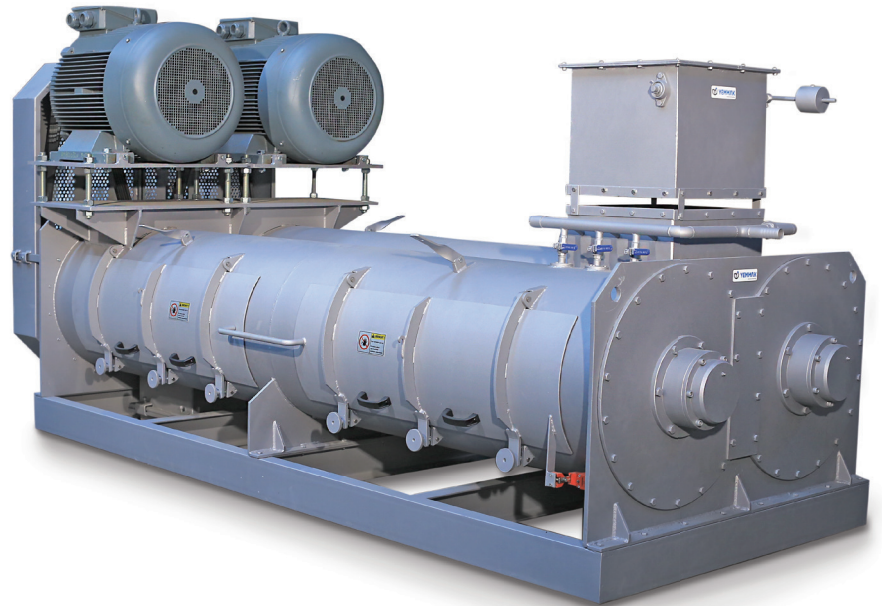


MOLASSES MIXER

FEATURES

- Made of AISI 304 quality stainless body
- Adjustable paddles
- Continuous system operation
- Single or double shaft option
- Dynamically and statically balanced rotor
- Ergonomic maintenance hatches
- Safety sensors
- Wide capacity range



MOLASSES MIXER

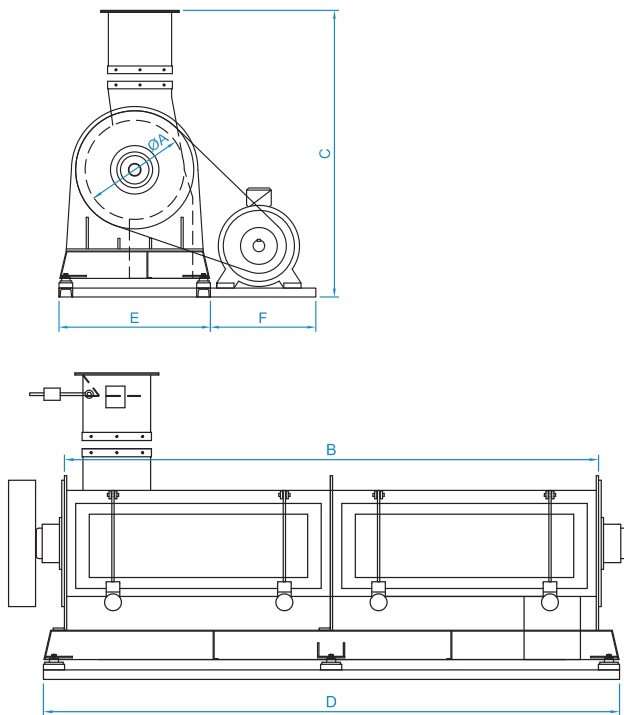
Yemmak combines high-technology with **strong engineering skills** to produce its molasses mixers. Molasses is a good source of **energy used in cattle feeds**. Adding the desired amount of molasses to the feed requires skill and experience.

With the molasses produced in different sizes with single and double shafts, the optimum solution is offered by choosing the most suitable size model.

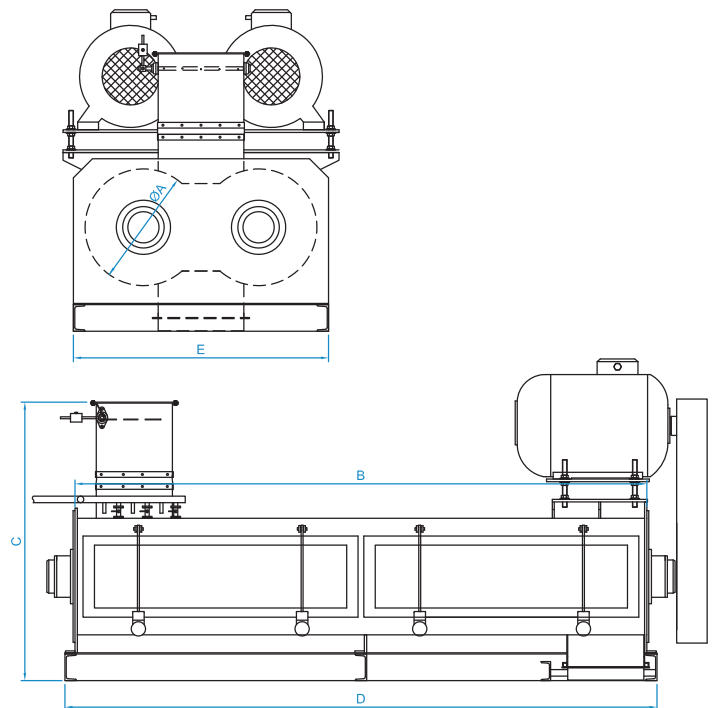
AREAS OF USAGE

- Ruminant Feed Mills

Molasses Mixer



Double Shaft Molasses Mixer



MOLASSES MIXER MODEL	DIMENSIONS(mm)						CAPACITY (ton/h)	MOTOR (kW)	WEIGHT (kg)
	øA	B	C	D	E	F			
MMIX 420x2150	420	2150	1300	2400	750	500	5-10	22	800
MMIX 460x2400	460	2400	1350	2550	750	500	11-20	30	1050
MMIX 600x3200	600	3200	1400	3500	1100	800	21-40	45	2500
MMIX 600x3200	600	3200	1400	3500	1100	800	41-60	55	2500

Capacity ranges are specified for these values: molasses (at 40-60°C) 3%-8%, oil 0.5%-2.5%, water 0.5%-3%

DOUBLE SHAFT MOLASSES MIXER MODEL	DIMENSIONS(mm)					CAPACITY (ton/h)	MOTOR (kW)	WEIGHT (kg)
	øA	B	C	D	E			
DMMIX 600x3000	600	3000	1500	3200	1340	61-80	45x2	3500

Capacity ranges are specified for these values: molasses (at 40-60°C) 3%-8%, oil 0.5%-2.5%, water 0.5%-3%

600 Evler Mah. Balıkesir Asf. Sol Taraf No: 96, 10201 Bandırma / Balıkesir

P: +90 266 733 83 63 (3 Lines) • F: +90 266 733 83 66

[f](#) [in](#) [ig](#) [yt](#) | yemmak.com

